

The background features a series of concentric blue ovals, with the innermost being a darker shade. A set of four parallel diagonal lines, also in blue, crosses the page from the bottom left towards the top right. The composer's name is centered within the top oval, and the title is centered within a smaller oval below it.

Roberto Beccaceci

FRAGMENT

Invenzione per orchestra








versione di

AMEN

per coro misto a cappella

Trombone basso in Sib

ABBREVIAZIONI E SEGNI CONVENZIONALI

pont.	sul ponticello,	tast.	sulla tastiera;		
punta	alla punta;				
SV	senza vibrare,	VL	<i>vibrato</i> lento,		
V	<i>vibrato</i> normale,	VR	<i>vibrato</i> rapido.		
l.v.	lasciar vibrare,	sm.to	smorzato;		
N	esecuzione normale,				
il segno:		indica il passaggio graduale da una modalità esecutiva ad un'altra;			
ord.	ordinario;				
s.att.	senza far sentire l'attacco;				
Sord.	con sordina,	S. Sord.	senza sordina;		
	corona lunga,		corona normale,		corona breve;
i segni:	  	indicano un comune livello dinamico di tutte le parti prive di indicazione propria.			

AVVERTENZA

I segni di alterazione hanno valore - esclusivamente - nell'ambito della misura e del singolo pentagramma cui si riferiscono.

Durata: 6' ca.

Trombone basso *in Si♭*


FRAGMENT

Invenzione per orchestra

versione di *AMEN*, per coro misto a cappella

R. Beccaceci
(2005)

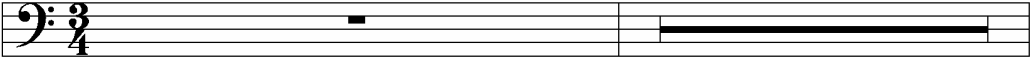
Adagio

 = 46 ca.

Trombone basso *in Si♭*

2-4

3



5-7

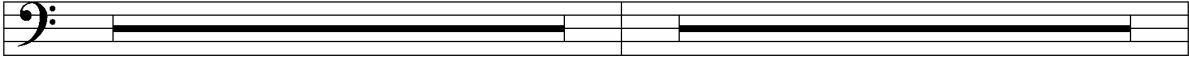
3

8-14

7

A

B



15-23

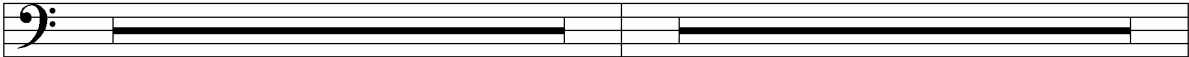
9

24-28

5

C

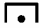
D




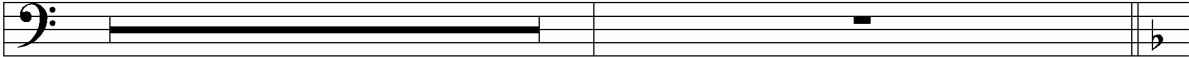
29-31

3

rit. molto e con estrema gradualità







Allegro

♩ = 138 ca.

E (frammento mozartiano)

33-44

Sord. muta



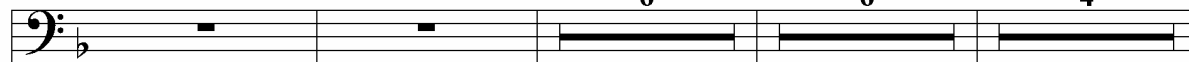
p con grande dolcezza

(*p*)

pp

49

S. Sord.



F

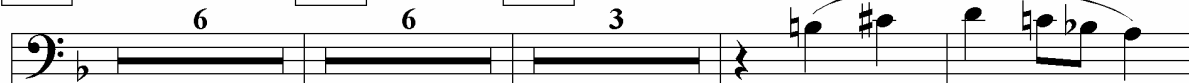
51-56 6

57-62 6

63-66 4

67-72

G



73-78 6

79-81 3

H

mf (sonorità relativa)

84



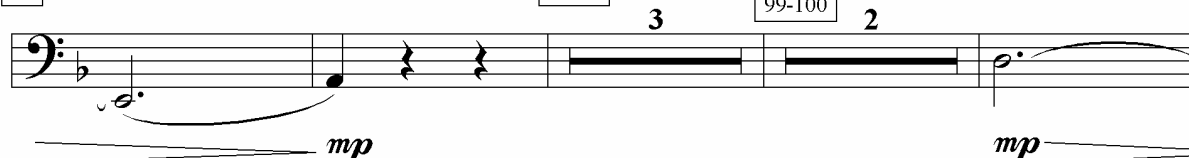
mp

89



mf

94



mp

mp

102

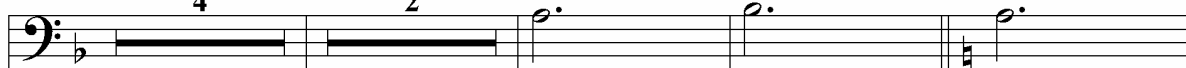
**J**

107-110

4

111-112

2

K*mf**mp*

116

*liev.***L**

123-126

4

127-137

11

*rit. sensibilmente e molto gradualmente* -----**M**

138-152

15

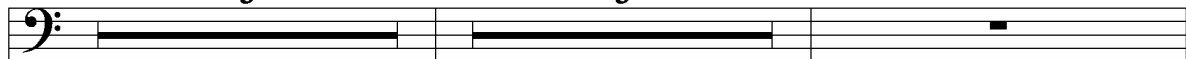
**Adagio (tempo iniziale)***rit.* -----**N**

154-156

3

157-159

3



Lentissimo

♩ = 27 ca.

161-162

2

pp

167

mp *f* *mf* *f* *ffff*